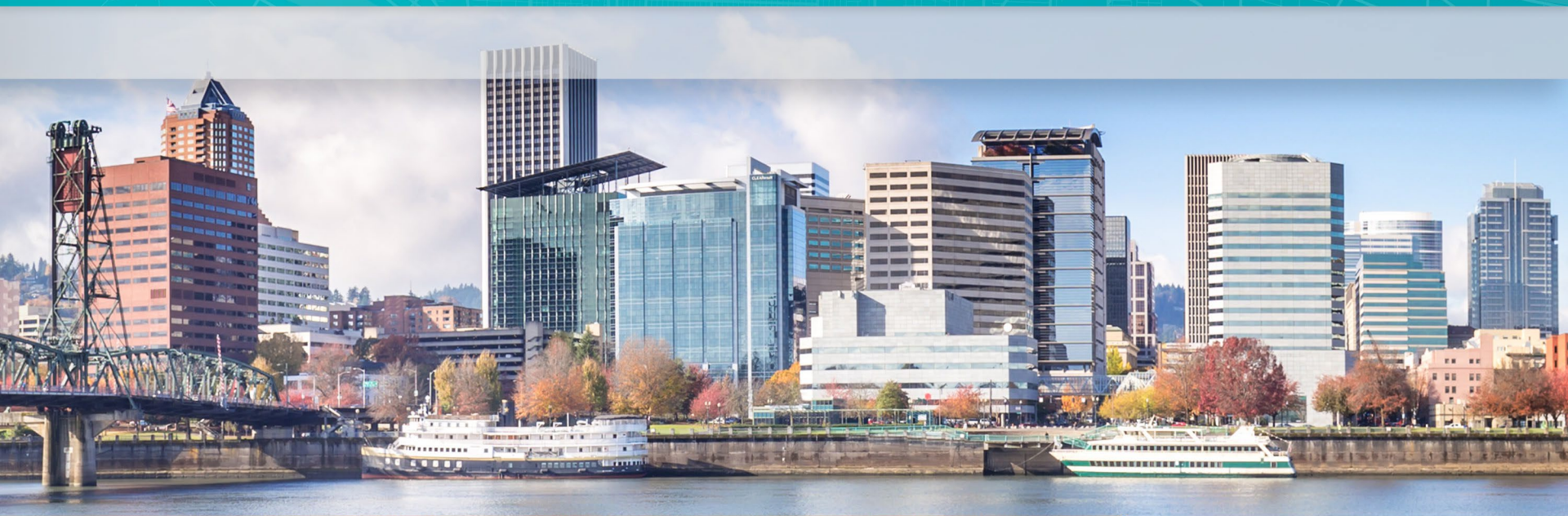


*Oregon Chapter - American Meteorological Society*

# February Meeting - A Look Back at the February 1996 Floods



*Dylan Rivera, Public Information Officer*

*Portland Bureau of Transportation Feb. 23, 2026*



**PBOT**  
PORTLAND BUREAU OF TRANSPORTATION

---

## Tonight:

- Forecasting is critically important
- Cite the experts, focus on impacts
- Everyone can help!

# Preparation for a weather emergency event

---

## NWS Forecast

# Preparation for a weather emergency event

---

NWS Forecast

PBOT ODOT TriMet

# Preparation for a weather emergency event

---

NWS Forecast

PBOT ODOT TriMet

Government Offices

Schools

Businesses

Community events

# Preparation for a weather emergency event

---

NWS Forecast

PBOT ODOT TriMet

**You!**

Government Offices

Schools

Businesses

Community events

# Tom McCall Waterfront Park, 1996

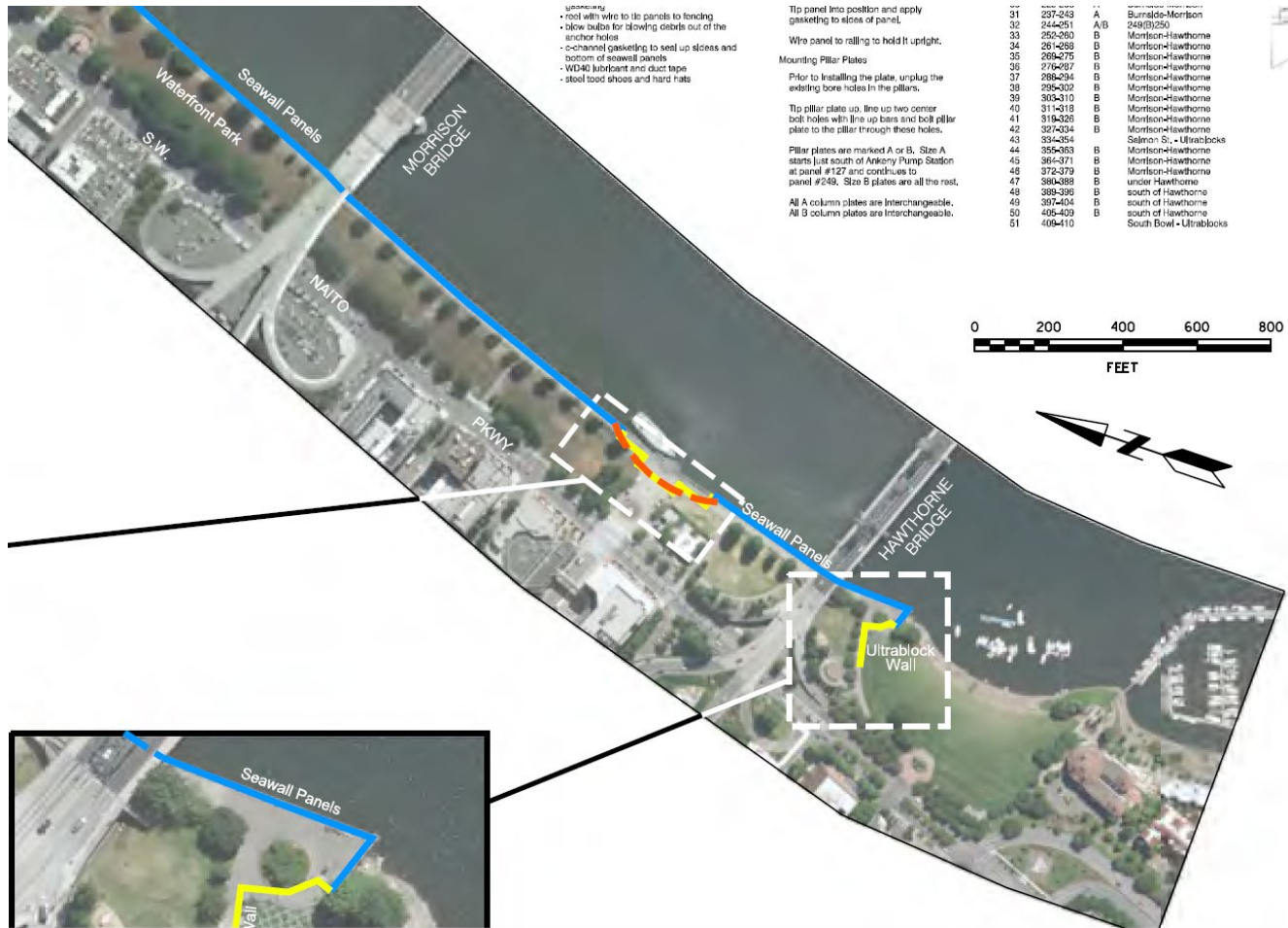
---



**"If you look at this wall behind us, it seems to me that it is a symbol of what our country does when everybody pulls together and works together and forgets about their differences and focuses their attention and their hearts and their minds."**

-- President Bill Clinton, standing in front of "Vera's Wall" along Tom McCall Waterfront Park during his visit on Feb. 14, 1996.  
(The Oregonian)

# Downtown Flood Defense Plan - current, updated



# Annual training at the seawall



# Annual training at the seawall



# New tools



Thank you!  
Oregon  
Department of  
Emergency  
Management



# Marine Drive flood wall plan



Google Maps images

# Marine Drive flood wall exercise



# N Portland Road flood wall plan



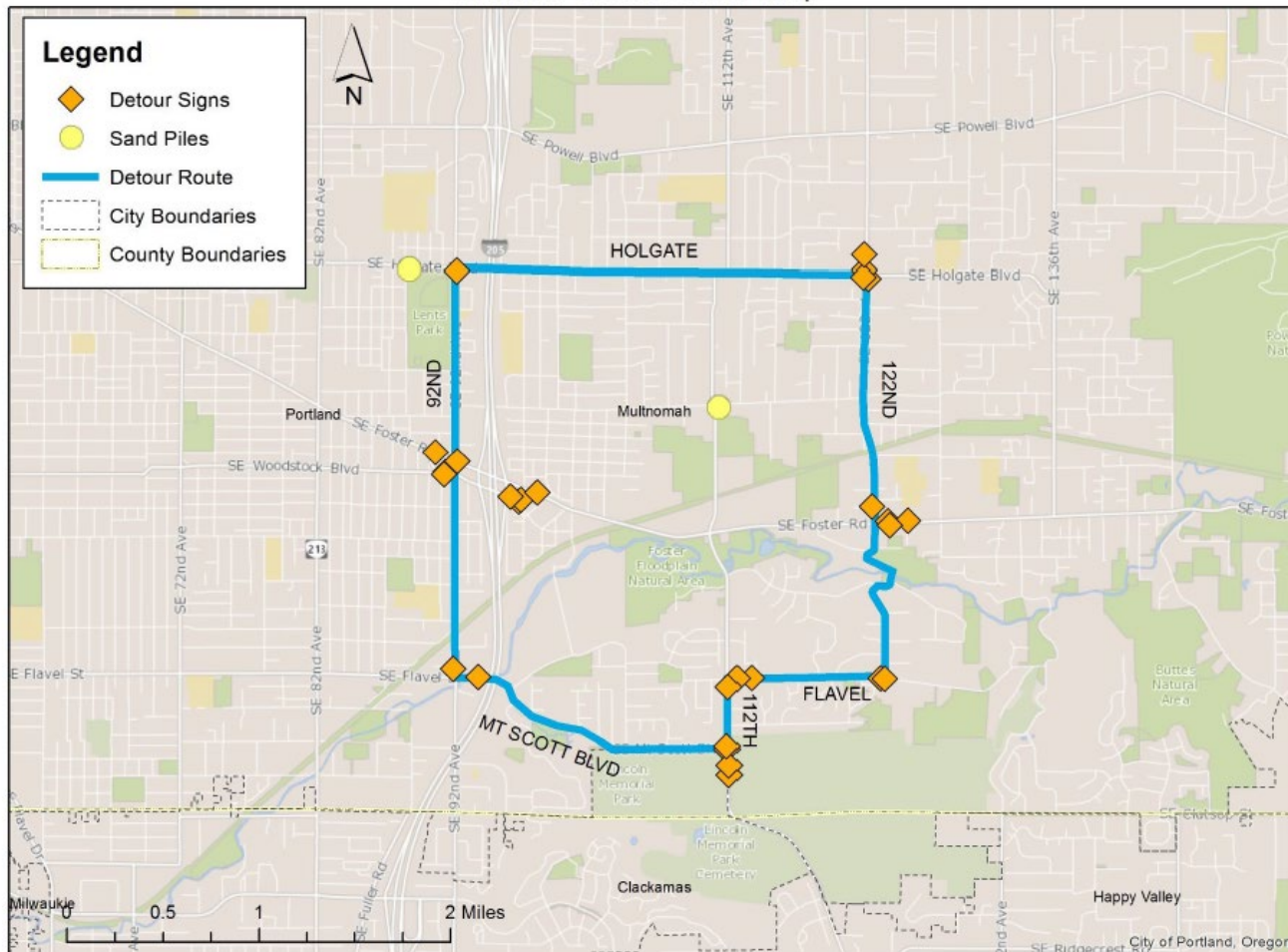
Google Maps image

# N Portland Road flood wall exercise



# Johnson Creek

## Johnson Creek Detour Map



# Teamwork is crucial



# Prepare, help out

[Home](#) / [Transportation](#) / [Weather](#)

## Adopt a storm drain

Information



Portland Bureau of Transportation (PBOT) crews work to keep city drains clear and prevent flooding. With over 58,000 drains in the city, we can't get to them all. "Adopt" a storm drain near you and help keep them clear of debris. Tips on clearing drains and information about stormwater runoff.

### About storm drains

### Contact

#### PBOT 24/7 Maintenance Dispatch

✉ [PDXroads@portlandoregon.gov](mailto:PDXroads@portlandoregon.gov)

📞 503-823-1700

Available 24/7 for emergency road hazards.  
Interpretation available | Interpretación disponible | Phiên dịch có sẵn | 提供口译服务 | Доступна интерпретация | Tafsiir la heli karo | Доступний переклад

### Related

[Leaf Day \(2025-26\)](#)

[Landslides, flooding, and sandbags](#)

[Report a Spill or Pollution](#)

### Topics

[Transportation and roads; Community education and outreach](#)

### Recent news

# Let us do the tough ones



# Learn how to prepare, sign up for more info

## Portland.gov/weather

### Weather

Program [Public Works](#)

Heavy rain, landslides, snow, or ice, the Portland Bureau of Transportation (PBOT) is the city's lead agency keeping city streets safe during severe weather. News, road closures, tips to get home safe, maps, and more.



[Services and Information](#) [News](#) [Documents](#)

### Featured content



[GET HOME SAFE: Rainy weather travel tips](#)



[Adopt a storm drain](#)



[Landslides, flooding, and sandbags](#)

# Stay in touch: Sign up for PBOT traffic advisories

---

## Travel Advisory:

Heavy rains Monday night through Wednesday, and especially heavy rain Tuesday morning, may lead to road hazards, street flooding



# GET HOME **SAFE**

TRAVEL SAFELY IN STORMY WEATHER

(Dec. 8, 2025) The Portland Bureau of Transportation (PBOT) warns the traveling public to be prepared for heavy rain that could create hazardous traveling conditions tonight through Wednesday.

The National Weather Service (NWS) has advised PBOT that rainstorms could bring 4.65 inches of precipitation through Wednesday morning, with a low chance of higher totals of more than 7.5 inches.

---

# Thank you!

Social media channels:  
**@PBOTinfo**